

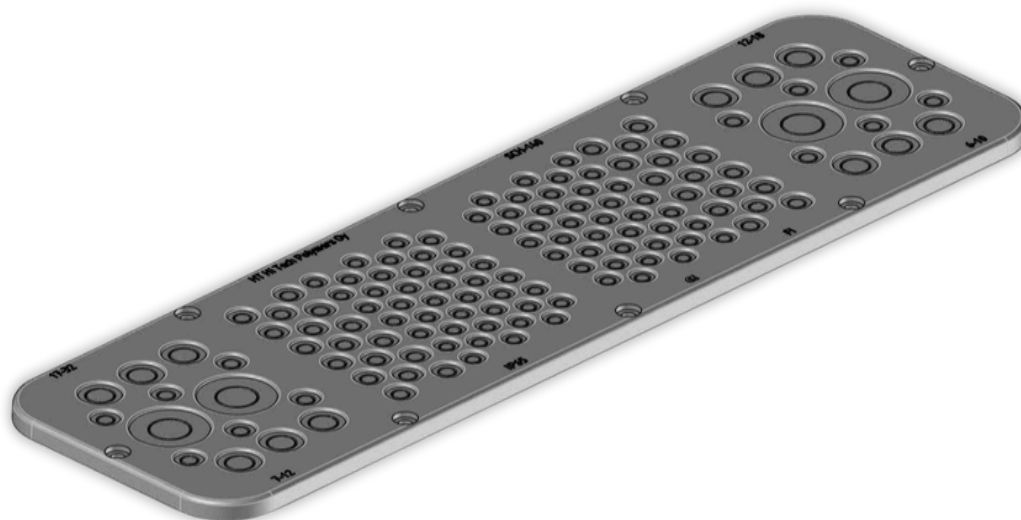
# TEKNISKT DATABLAD

SCH-170

## Multifläns / SCH-170

### BESKRIVNING

Suitable for opening Schneider centers, fixing holes 4mm 8 pcs. The corners must be fitted with 3mm drill screws to ensure tightness, the places marked at the corners. Flange size 130mm x 545mm. IP-class IP65, responsibility after perforation is with the installer, halogen free material TPE-SEBS, TPE-SEBS V0, operating temperature -40 +100 C, country of manufacture Finland, FI, CE marked.



### Art.nr

SCH-170

### Storlek

B545 D130

### Benämning

4 x 17mm - 32mm, 12 x 12mm - 18mm, 50 x 7mm  
- 12mm, 111 x 6mm - 10mm

C-Profil AB

Tagenevägen 70, 485 37 Hisings-Kärä

tel: 031-575785

e-mail: info@c-profil.se