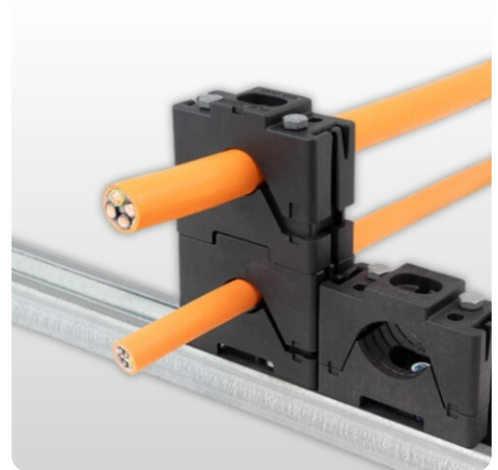


Modular cable clamps | MSMC

Stackable clamps | Cable diameters Ø10 - 55 mm

Article:	MSMC
Brand:	icotek
Material Base frame:	Polyamide
Material screw mounting:	Steel, zinc/nickel passivated (ISO 4017)
Flammability:	Self-extinguishing UL94-V0
Temperature:	-40 C° to 140 C°
Mounting options:	Screw mounting
Characteristics:	Vibration proof, Silicone free, Halogen free, UV-resistant



Description

The modular stackable cable clamp MSMC is used for easy, quick and secure fastening of cables, pipes and other cylindrical components. The variable clamping range is up to 16 mm. The great advantage of this cable cleat is that it can be easily extended by stacking or baying. By using the CMC30 coupler, different clamping areas can be connected to each other. The MSMC offers a very high level of corrosion protection thanks to the choice of materials for the cable clamps and screws.

The cable cleat consists of an upper and a lower part as well as hexagon head screws. A coupler is used to easily connect several cable clamps together horizontally. The longitudinal and transverse ridges of the support surface serve to absorb torsional and tensile forces. The central mounting point (slotted hole) offers a high degree of flexibility on many surfaces. For even greater stability and torsion resistance, two long screws can be used for fastening.

Mounting location: Metal plates, 30 mm DIN rail, universal.

The cable cleats are available as Set A for lining up and stacking or as Set B for baying

- Set A additionally contains two long hexagon head screws. The cable clamp can be combined with a sliding nut for optional assembly on the C-rail.
- Set B contains a cable clamp (upper and lower part), a coupler and two short hexagon head screws.

Advantages:

- Several cable clamps can be bayed or stacked together
- The diameter of the cables can vary up to 16 mm
- Designed for high strain relief
- Suitable for large cable diameters up to 55 mm
- Suitable for large bending radii of rigid cables
- Assembly on surfaces or on the C-rail
- Ridges in the half shells enable the absorption of tensile and torsional forces



Article number

Read more at icotek