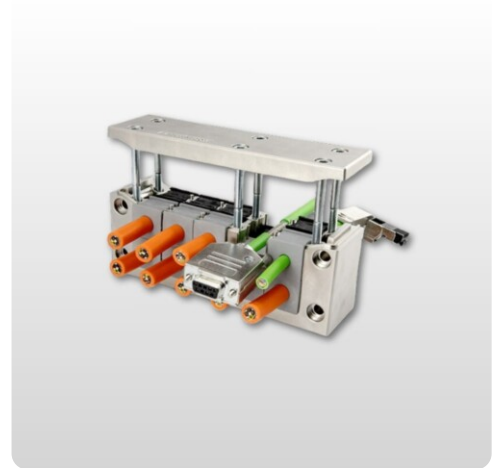


EMC Cable Entry Frame | EMC-KEL-DS

Split EMC frame | for cables with connector | IP55

Article:	EMC-KEL-DS
Brand:	icotek
IP Rating:	IP54, IP55
Material:	Polyamide
Flammability:	UL94-HB
Temperature:	-40°C to +140°C
Mounting options:	Screw mount



Description

EMC Cable Entry Frame | EMC-KEL-DS is a divisible cable entry frame that is metallized to allow good electrical conductivity.

The front cable grommet (KT) is used for strain relief and cable sealing on the cable jacket. The cable shield is contacted over 360° via the rear conductive grommet (EMC-KT).

The EMC-KEL-DS frames match exactly the cut-out dimensions for 24-pin standard industrial connectors. Either a cut-out of 36 mm or 46 mm in height can be chosen depending on the cables being routed.

A conductive flat gasket, which is included in the delivery, connects the cable entry frames to the conductive housing wall. This can be an advantage when the housing wall is not painted and therefore conductive.

Advantages

- Both conducted and field-bound disturbances can be reliably diverted
- Strain relief and sealing are separated from the EMC contact
- Scratch-resistant surface
- EMC grommets made entirely from conductive elastomer
- Very good dissipation values
- Very good shielding effect with regard to EMC tightness

Article number

Art.No	E-number	Description	Number of Cables	Maximum cable diameter	Length mm	Width mm	Height mm	Mounting height	Cutout	Suitable For Deployment	Unit	Pc
99412		EMC Cable Entry Frame EMC-KEL-DS	4	35	147	58	40	40	112x36	2 x EMC-KT small, 2 x EMC- KT large	st	1
99411		EMC Cable Entry Frame EMC-KEL-DS	7	35	147	58	40	40	112x36	6 x EMC-KT small, 1 x EMC- KT large	st	1
99410		EMC Cable Entry Frame EMC-KEL-DS	10	17	147	58	40	40	112x36	10 x EMC-KT small, 10 x KT small	st	1