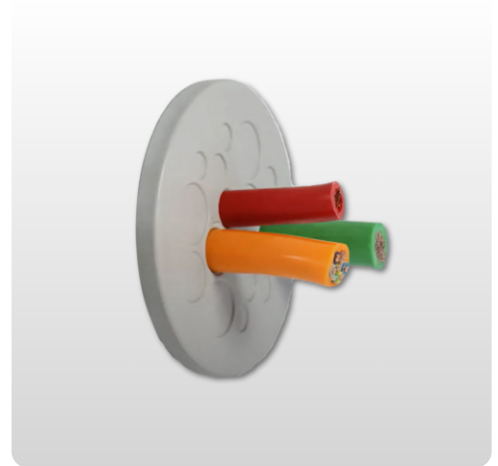


Cable entry plate | KEL-DP-Round

Multi-membrane | hole size M16 - M50 | IP65 | UL Type 12

Article:	KEL-DP-Round
Brand:	icotek
Protection class:	IP54, IP55, IP64, IP65
UL Type:	UL Type 12
Flammability:	UL94-V0, self-extinguishing
Temperature:	-40°C to 90°C
Material:	Elastomer
Mounting options:	Snap-in
Characteristics:	Halogen-free, Silicone-free



Description

Cable entry plate multi-membrane / KEL-DP-Round are designed to route cables without connectors as well as pneumatic or hydraulic hoses. KEL-DP is an alternative to traditional cable glands. Quite simply, a small hole is made in the thin membrane and the cables are pushed through. KEL-DP provides protection class IP65 / NEMA Type 12. ST-B Plugs can be used to seal holes in the membrane if cables have been removed.



Advantages:

- Quick and easy assembly, no tools required
- Round design for metric cutouts
- Hygienic design – free from dirt-collecting recesses
- High cable density
- Cost effective
- For wall thickness 1.5 – 4 mm

Article number

Art.No	Description	Number of Cables	Max Kabeldia.	Height mm	Ytter Dia.	Reaming Metric	My Wall	Max Wall	Cable. Interval	Color	Unit	Pc
43532	KEL-DP 32 10 A round	10	9.4	12	38	M32	1.5	2.5	6 x 0.04-0.20 inches 2 x 0.04-0.25 inches 2 x 0.04-0.37 inches	gray	st	10
43536	KEL-DP 40 9 Round	9	11.3	12	50	M40	1.5	2.5	8 x 1-9.5 mm 1 x 1-11.3 mm	gray	st	10
43537	KEL-DP 40 16 A round	16	11.3	12	50	M40	1.5	2.5	2 x 1-5.3 mm 10 x 1-6.3 mm 2 x 1-9.5 mm 2 x 1-11.3 mm	gray	st	10
43538	KEL-DP 40 17 A round	17	7.2	12	50	M40	1.5	2.5	1 x 1-4 mm 16 x 1-7.2 mm	gray	st	10
43550	KEL-DP 50	16	11.3	12	60	M50	1.5	2.5	4 x 1-5.3 mm 5 x 1-6.3 mm 3 x 1-9.5 mm 4 x 1-11.3 mm	gray	st	10
43551	KEL-DP 50	12	11.2	12	60	M50	1.5	2.5	10 x 1-9.2 mm 2 x 1-11.2 mm	gray	st	10
43552	KEL-DP 50	20	9.3	12	60	M50	1.5	2.5	16 x 1-6.3 mm 4 x 1-9.3 mm	gray	st	10
43553	KEL-DP 50	18	12	12	60	M50	1.5	2.5	2 x 1-4 mm 2 x 1-6 mm 4 x 1-7.2 mm 5 x 1-9.4 mm 5 x 1-12 mm	gray	st	10
43554	KEL-DP 50	9	18	12	60	M50	1.5	2.5	5 x 1-7 mm 4 x 1-18 mm	gray	st	10

Article number

43555	KEL-DP 50	11	22.5	12	60	M50	1.5	2.5	7 x 1-7.2 mm 3 x 1-11.2 mm 1 x 1-22.5 mm	gray	st	10
43556	KEL-DP 50	35	5.2	12	60	M50	1.5	2.5	35 x 1-5.2 mm	gray	st	10
43560	KEL-DP 32 10 B round	10	9.4	12	38	M32	2.8	4	6 x 0.04-0.20 inches 2 x 0.04-0.25 inches 2 x 0.04-0.37 inches	gray	st	10
43561	KEL-DP 40 9 round	9	11.3	12	50	M40	2.8	4	8 x 1-9.5 mm 1 x 1-11.3 mm	gray	st	10
43562	KEL-DP 50	12	11.2	12	60	M50	2.8	4	10 x 1-9.2 mm 2 x 1-11.2 mm	gray	st	10
43563	KEL-DP 40 16 B round	16	11.3	12	50	M40	2.8	4	2 x 1-5.3 mm 10 x 1-6.3 mm 2 x 1-9.5 mm 2 x 1-11.3 mm	gray	st	10
43564	KEL-DP 50	16	11.3	12	60	M50	2.8	4	4 x 1-5.3 mm 5 x 1-6.3 mm 3 x 1-9.5 mm 4 x 1-11.3 mm	gray	st	10
43565	KEL-DP 40 17 Round	17	7.2	12	50	M40	2.8	4	1 x 1-4 mm 16 x 1-7.2 mm	gray	st	10
43566	KEL-DP 50	20	9.3	12	60	M50	2.8	4	16 x 1-6.3 mm 4 x 1-9.3 mm	gray	st	10
43567	KEL-DP 50	18	12	12	60	M50	2.8	4	2 x 1-4 mm 2 x 1-6 mm 4 x 1- 7.2 mm 5 x 1- 9.4 mm 5 x 1- 12 mm	gray	st	10

Article number

43568	KEL-DP 50	9	18	12	60	M50	2.8	4	5 x 1-7 mm 4 x 1-18 mm	gray	st	10
43569	KEL-DP 50	11	22.5	12	60	M50	2.8	4	7 x 1-7.2 mm 3 x 1-11.2 mm 1 x 1-22.5 mm	gray	st	10
43570	KEL-DP 50	35	5.2	12	60	M50	2.8	4	35 x 1-5.2 mm	gray	st	10
43571	KEL-DP 20 1 round	1	14	12	27	M20	1.5	2.5	1 x 1-14 mm	gray	st	10
43592	KEL-DP 32 7 A round	7	8	12	38	M32	1.5	2.5	7 x 1-8 mm	gray	st	10
43593	KEL-DP 32 10-2 Round	10	6.4	12	38	M32	1.5	2.5	10 x 1-6.4 mm	gray	st	10
43594	KEL-DP 32 11 A round	11	8	12	38	M32	1.5	2.5	2 x 1-8 mm 9 x 1-5.2 mm	gray	st	10
43595	KEL-DP 32 13 A round	13	5.2	12	38	M32	1.5	2.5	13 x 1-5.2 mm	gray	st	10
43596	KEL-DP 32 7 B round	7	8	12	38	M32	2.8	4	7 x 1-8 mm	gray	st	10
43597	KEL-DP 32 10-2 round	10	6.4	12	38	M32	2.8	4	10 x 1-6.4 mm	gray	st	10
43598	KEL-DP 32 11 B round	11	8	12	38	M32	2.8	4	2 x 1-8 mm 9 x 1-5.2 mm	gray	st	10
43599	KEL-DP 32 13 Round	13	5.2	12	38	M32	2.8	4	13 x 1-5.2 mm	gray	st	10
43600	KEL-DP 16 1 A round	1	9.2	12	23	M16	1.5	2.5	1 x 1-9.2 mm	gray	st	10
43601	KEL-DP 16 3 A round	3	5.2	12	23	M16	1.5	2.5	3 x 1-5.2 mm	gray	st	10

Article number

43602	KEL-DP 16 7 Round	7	3.2	12	23	M16	1.5	2.5	7 x 1-3.2 mm	gray	st	10
43603	KEL-DP 12 1 Round	1	6.2	12	19	M12	1.5	2.5	1 x 1-6.2 mm	gray	st	10
50532	KEL-DP 32 10 A round	10	9.4	12	38	M32	1.5	2.5	6 x 0.04-0.20 inches 2 x 0.04-0.25 inches 2 x 0.04-0.37 inches	black	st	10
50535	KEL-DP 16 1 A round	1	9.2	12	23	M16	1.5	2.5	1 x 1-9.2 mm	black	st	10
50550	KEL-DP 50	16	11.3	12	60	M50	1.5	2.5	4 x 1-5.3 mm 5 x 1-6.3 mm 3 x 1-9.5 mm 4 x 1-11.3 mm	black	st	10
50551	KEL-DP 50	12	11.2	12	60	M50	1.5	2.5	10 x 1-9.2 mm 2 x 1-11.2 mm	black	st	10
50552	KEL-DP 50	20	9.3	12	60	M50	1.5	2.5	16 x 1-6.3 mm 4 x 1-9.3 mm	black	st	10
50553	KEL-DP 50	18	12	12	60	M50	1.5	2.5	2 x 1-4 mm 2 x 1-6 mm 4 x 1- 7.2 mm 5 x 1- 9.4 mm 5 x 1- 12 mm	black	st	10
50554	KEL-DP 50	9	18	12	60	M50	1.5	2.5	5 x 1-7 mm 4 x 1-18 mm	black	st	10
50555	KEL-DP 50	11	22.5	12	60	M50	1.5	2.5	7 x 1-7.2 mm 3 x 1-11.2 mm 1 x 1-22.5 mm	black	st	10

Article number

50556	KEL-DP 50	35	5.2	12	60	M50	1.5	2.5	35 x 1-5.2 mm	black	st	10
50560	KEL-DP 32 10 B round	10	9.4	12	38	M32	2.8	4	6 x 0.04-0.20 inches 2 x 0.04-0.25 inches 2 x 0.04-0.37 inches	black	st	10
50562	KEL-DP 50	12	11.2	12	60	M50	2.8	4	10 x 1-9.2 mm 2 x 1-11.2 mm	black	st	10
50564	KEL-DP 50	16	11.3	12	60	M50	2.8	4	4 x 1-5.3 mm 5 x 1-6.3 mm 3 x 1-9.5 mm 4 x 1-11.3 mm	black	st	10
50566	KEL-DP 50	20	9.3	12	60	M50	2.8	4	16 x 1-6.3 mm 4 x 1-9.3 mm	black	st	10
50567	KEL-DP 50	18	12	12	60	M50	2.8	4	2 x 1-4 mm 2 x 1-6 mm 4 x 1- 7.2 mm 5 x 1- 9.4 mm 5 x 1- 12 mm	black	st	10
50568	KEL-DP 50	9	18	12	60	M50	2.8	4	5 x 1-7 mm 4 x 1-18 mm	black	st	10
50569	KEL-DP 50	11	22.5	12	60	M50	2.8	4	7 x 1-7.2 mm 3 x 1-11.2 mm 1 x 1-22.5 mm	black	st	10
50570	KEL-DP 50	35	5.2	12	60	M50	2.8	4	35 x 1-5.2 mm	black	st	10