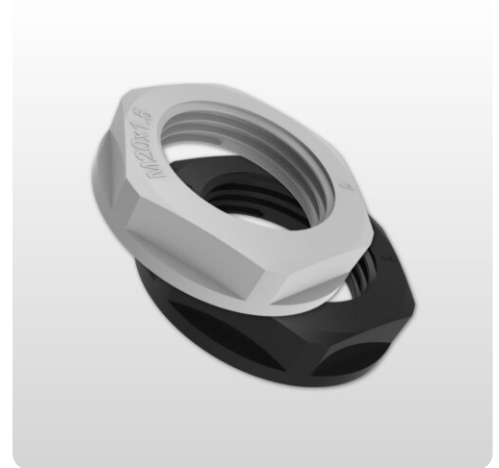


Lock nut with collar | Polyamide

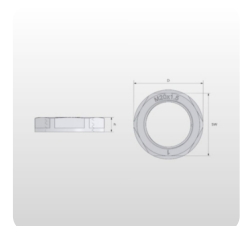
For polyamide cable glands | M12 - M63 | RAL7035 | RAL7001 | RAL 9005

Article:	Lock nut with collar Polyamide
Brand:	Bimed
Material:	Polyamide 6 (30% glass fiber reinforced)
Flammability:	HB according to UL94
Operating temperature:	-20°C to +100°C
Thread type:	Metric
Color:	RAL7035 RAL7001 RAL 9005



Description

- Locknuts with flange in Polyamide- an accessory used to secure the cable gland.
- It is designed for use in non-threaded holes on enclosures



Article number

Art.No	Description	Size	Outer diameter	Height mm	Color	Unit	Pc
CBML-1S	Locknut with collar PA	M12x1.5	19.5	5	RAL7035	st	1
CBML-0S	Locknut with collar PA	M12x1.5	19.5	5	RAL7001	st	1
CBML-2S	Locknut with collar PA	M12x1.5	19.5	5	RAL9005	st	1
CBML-11	Locknut with collar PA	M16x1.5	24.2	5	RAL7035	st	1
CBML-01	Locknut with collar PA	M16x1.5	24.2	5	RAL7001	st	1
CBML-21	Locknut with collar PA	M16x1.5	24.2	5	RAL9005	st	1
CBML-12	Locknut with collar PA	M20x1.5	28.6	6	RAL7035	st	1
CBML-02	Locknut with collar PA	M20x1.5	28.6	6	RAL7001	st	1
CBML-22	Locknut with collar PA	M20x1.5	28.6	6	RAL9005	st	1
CBML-13	Locknut with collar PA	M25x1.5	35	6	RAL7035	st	1
CBML-03	Locknut with collar PA	M25x1.5	35	6	RAL7001	st	1
CBML-23	Locknut with collar PA	M25x1.5	35	6	RAL9005	st	1
CBML-14	Locknut with collar PA	M32x1.5	46.1	7	RAL7035	st	1
CBML-04	Locknut with collar PA	M32x1.5	46.1	7	RAL7001	st	1
CBML-24	Locknut with collar PA	M32x1.5	46.1	7	RAL9005	st	1
CBML-15	Locknut with collar PA	M40x1.5	55.3	7	RAL7035	st	1
CBML-05	Locknut with collar PA	M40x1.5	55.3	7	RAL7001	st	1
CBML-25	Locknut with collar PA	M40x1.5	55.3	7	RAL9005	st	1
CBML-16	Locknut with collar PA	M50x1.5	65.7	8	RAL7035	st	1
CBML-06	Locknut with collar PA	M50x1.5	65.7	8	RAL7001	st	1

Article number

CBML-26	Locknut with collar PA	M50x1.5	65.7	8	RAL9005	st	1
CBML-17	Locknut with collar PA	M63x1.5	82.5	8	RAL7035	st	1
CBML-07	Locknut with collar PA	M63x1.5	82.5	8	RAL7001	st	1
CBML-27	Locknut with collar PA	M63x1.5	82.5	8	RAL9005	st	1