

Lighting LED | ALU-LINE

Innovative LED lighting | 120 - 240V | 900 lm & 1350 lm | IP20

Article:	ALU-LINE
Brand:	icotek
Luminous flux:	900lm 1350lm
IP rating:	IP20, Protection class I (Protective conductor connection)
Temperature:	-20°C to 50°C
Material Luminaire cover:	Polycarbonate
Housing Material:	Aluminum, extruded
Mounting options:	Mounting with screw
Voltage:	100 - 240V

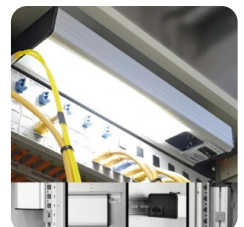


Description

Lighting LED / ALU-LINE provides efficient lighting in enclosures for industrial and IT applications. Their aluminum casing makes them extra high-quality and stable. Lighting LED / ALU-LINE offers an integrated socket as a practical extra advantage. This is available in EU, CH, BE or GB versions. The High Power LED shines with 1350 lumens and provides a balanced, homogeneous light. Another advantage is that the passage of several luminaires is possible.

Advantages:

- Integrated socket available in different versions: EU, CH, BE, GB
- High-quality and stable aluminum housing
- Different mounting types: screw mounting and mounting on top rail 35 mm
- Efficient LED lighting with 1350 lm
- Available with motion sensor
- Door operated switch is available as an option
- Connection of several luminaires possible
- A door-operated switch is available as an option



Article number

Art.No	Description	Type	Input voltage AC	Luminous flux	Mounting & Assembly	Width mm	Height mm	Length mm	Protection class	PDF
81401	Lighting LED ALU-LINE 350 UL/CSA	PIR On/Off Switch	100-240V	1280 lumens	Screw	113	48	347	IP20	PDF
81403	Lighting LED ALU-LINE 350 UL/CSA	On/Off Switch	100-240V	1280 lumens	Screw	113	48	347	IP20	PDF
81404	Lighting LED ALU-LINE 200 UL/CSA	On/Off Switch	100-240V	900 lumens	Screw	113	48	197	IP20	PDF
81408	Lighting LED ALU-LINE 350 UL/CSA	On/Off Switch	120V	1280 lumens	Screw	113	48	347	IP20	PDF