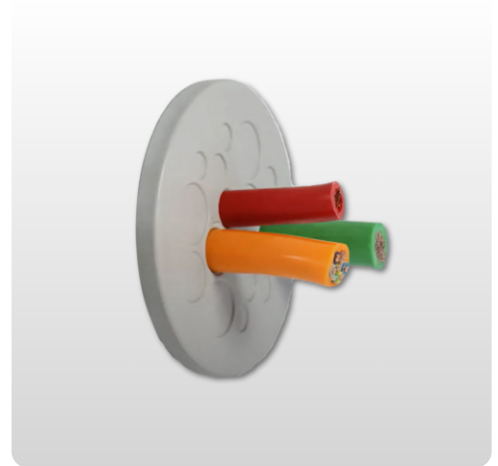


Cable entry plate | KEL-DP-Round

Multi-membrane | hole size M16 - M50 | IP65 | UL Type 12

Article:	KEL-DP-Round
Brand:	icotek
Protection class:	IP54, IP55, IP64, IP65
UL Type:	UL Type 12
Flammability:	UL94-V0, self-extinguishing
Temperature:	-40°C to 90°C
Material:	Elastomer
Mounting options:	Snap-in
Characteristics:	Halogen-free, Silicone-free



Description

Cable entry plate multi-membrane / KEL-DP-Round are designed to route cables without connectors as well as pneumatic or hydraulic hoses. KEL-DP is an alternative to traditional cable glands. Quite simply, a small hole is made in the thin membrane and the cables are pushed through. KEL-DP provides protection class IP65 / NEMA Type 12. ST-B Plugs can be used to seal holes in the membrane if cables have been removed.



Advantages:

- Quick and easy assembly, no tools required
- Round design for metric cutouts
- Hygienic design – free from dirt-collecting recesses
- High cable density
- Cost effective
- For wall thickness 1.5 – 4 mm

Article number

Read more at icotek