

Enclosure | MBI-BK-OK

Industrial plastic enclosure | Transparent lid | PC | RAL9005 | IK08 | IP66

Article:	MBI-BK-OK
Brand:	Multi-Box
Protection class:	IP66
Material Bottom:	Polycarbonate GF10
Lid Material:	Polycarbonate
Sealing material:	Polyurethane
Material screws:	Plastic
Flammability:	V0 (Self-extinguishing)
Operating temperature:	-40°C to 100°C (permanent)
Color:	RAL 9005



Description

The MBI-BK-OK BLACK enclosure is the perfect combination of discreet presence, modern design and excellent technical performance. The bases are designed with flat side walls. These can be mechanically processed according to the customer's wishes.

- The bottom of the box is supplied in black and the lids are transparent in this version.

Its black design integrates seamlessly into industrial environments and enables a discreet, almost invisible installation in factory halls, control cabinets, camera systems or elevator installations. Thanks to its design in elegant black color and clean shapes, MBI-BLACK boxes have a modern appearance.

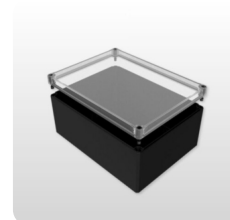
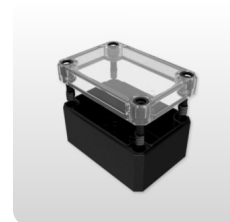
Meets high technical requirements

Enclosure / MBI-BK-OK reliably meets the high technical requirements of industrial installation technology. MBI BLACK enclosures are made of glass-fiber reinforced polycarbonate. The material is UV-resistant (UL 746C F1) and self-extinguishing (UL 94 V0). With a seamlessly foamed 2-component polyurethane gasket, all types achieve protection class IP66. Cover screws are made of plastic material and are therefore completely corrosion-free. The impact resistance corresponds to IK08, making MBI BLACK enclosures ideal for use in industrial and outdoor applications.

- UV-resistant
- Plastic screws for mounting are included in the delivery.
- MBI enclosures offer a variety of mounting points for direct fixation of components to the base.

Customize your box

- Mounting & Assembly
- Printing
- Design
- Color



Article number

Art.No	Description	Type		Length mm	Width mm	Height mm	Protection class	Color	PDF
0907109760	Enclosure MBI-BK-OK PC	Transp. Lid	MBI-PC BK 090706 OK	94	65	57	IP66	RAL9005	PDF
0907103960	Enclosure MBI-BK-OK PC	Transp. Lid	MBI-PC BK 130906 OK	130	94	57	IP66	RAL9005	PDF
0907108960	Enclosure MBI-BK-OK PC	Transp. Lid	MBI-PC BK 180906 OK	180	94	57	IP66	RAL9005	PDF
0907101170	Enclosure MBI-BK-OK PC	Transp. Lid	MBI-PC BK 111107 OK	110	110	66	IP66	RAL9005	PDF
0907108390	Enclosure MBI-BK-OK PC	Transp. Lid	MBI-PC BK 181309 OK	180	130	90	IP66	RAL9005	PDF
0907108890	Enclosure MBI-BK-OK PC	Transp. Lid	MBI-PC BK 181809 OK	182	180	90	IP66	RAL9005	PDF
0907105810	Enclosure MBI-BK-OK PC	Transp. Lid	MBI-PC BK 251811 OK	254	180	111	IP66	RAL9005	PDF
0907102230	Enclosure MBI-BK-OK PC	Transp. Lid	MBI-L-PC BK 202013 OK	200	200	130	IP66	RAL9005	PDF
0907103230	Enclosure MBI-BK-OK PC	Transp. Lid	MBI-L-PC BK 302013 OK	300	200	130	IP66	RAL9005	PDF
0907103380	Enclosure MBI-BK-OK PC	Transp. Lid	MBI-L-PC BK 303019 OK	300	300	185	IP66	RAL9005	PDF
0907104380	Enclosure MBI-BK-OK PC	Transp. Lid	MBI-L-PC BK 403019 OK	400	300	185	IP66	RAL9005	PDF