

## Enclosure | MBI-BK-MK

Industrial plastic enclosure | Knockouts & Transparent caps | PC | RAL9005 | IK08 | IP66

Article:	MBI-BK-MK
Brand:	Multi-Box
Protection class:	IP66
Material Bottom:	Polycarbonate GF10
Lid Material:	Polycarbonate
Seal material:	Polyurethane
Screw material:	Plastic
Flammability:	V0 (Self-extinguishing)
Operating temperature:	-40°C to 100°C (permanent)
Color:	RAL 9005



### Description

The MBI-BK-MK enclosure is the perfect combination of discreet presence, modern design and excellent technical performance. The base of the enclosure is designed with metric pre-punched knockouts on all four sides. These can be opened for cable entry.

- Covers are supplied transparent in this version.

Its all-black design integrates seamlessly into industrial environments and enables a discreet, almost invisible installation in factory halls, control cabinets, camera systems or elevator installations. Thanks to its design in elegant black color and clean shapes, MBI-BLACK boxes have a modern appearance.

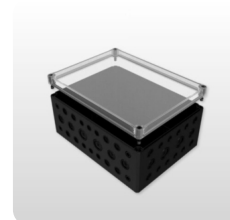
Meets high technical requirements

Junction box / MBI-BK-MK reliably meets the high technical requirements for industrial installation technology. MBI BLACK enclosures are made of fiberglass-reinforced polycarbonate. The material is UV-resistant (UL 746C F1) and self-extinguishing (UL 94 V0). With a seamless foamed 2-component polyurethane gasket, all types achieve protection class IP66. Cover screws are made of plastic material and are therefore completely corrosion-free. The impact resistance corresponds to IK08, which makes the MBI BLACK enclosures ideal for use in industrial and outdoor applications.

- UV-resistant
- Plastic screws for mounting are included in the delivery.
- MBI enclosures offer a variety of mounting points for direct fixation of components to the base.

Customize your box

- Mounting & Assembly
- Printing
- Design
- Color



## Article number

Art.No	Description	Designation 2	Type	Length mm	Width mm	Height mm	Protection class	Color	Unit	Pc
0908109760	Enclosure MBI-BK-MK   PC	Transp. Lid   Knockout	MBI-PC BK 090706 MK	57	94	65	IP66	RAL9005	st	1
0908103960	Enclosure MBI-BK-MK   PC	Transp. Lid   Knockout	MBI-PC BK 130906 MK	57	130	94	IP66	RAL9005	st	1
0908108960	Enclosure MBI-BK-MK   PC	Transp. Lid   Knockout	MBI-PC BK 180906 MK	57	180	94	IP66	RAL9005	st	1
0908101170	Enclosure MBI-BK-MK   PC	Transp. Lid   Knockout	MBI-PC BK 111107 MK	66	110	110	IP66	RAL9005	st	1
0908108390	Enclosure MBI-BK-MK   PC	Transp. Lid   Knockout	MBI-PC BK 181309 MK	90	180	130	IP66	RAL9005	st	1
0908108890	Enclosure MBI-BK-MK   PC	Transp. Lid   Knockout	MBI-PC BK 181809 MK	90	182	180	IP66	RAL9005	st	1
0908105810	Enclosure MBI-BK-MK   PC	Transp. Lid   Knockout	MBI-PC BK 251811 MK	111	254	180	IP66	RAL9005	st	1
0908102230	Enclosure MBI-BK-MK   PC	Transp. Lid   Knockout	MBI-L-PC BK 202013 MK	130	200	200	IP66	RAL9005	st	1
0908103230	Enclosure MBI-BK-MK   PC	Transp. Lid   Knockout	MBI-L-PC BK 302013 MK	130	300	200	IP66	RAL9005	st	1
0908103380	Enclosure MBI-BK-MK   PC	Transp. Lid   Knockout	MBI-L-PC BK 303019 MK	185	300	300	IP66	RAL9005	st	1
0908104380	Enclosure MBI-BK-MK   PC	Transp. Lid   Knockout	MBI-L-PC BK 403019 MK	185	400	300	IP66	RAL9005	st	1