

Cable entry plate | KEL-DPU-HD

Multi-membrane | Hygienic | FDA Compliant | Robust, strong strain relief | IP66- IP68

Article:	KEL-DPU-HD
Brand:	icotek
Protection class:	IP54, IP55, IP64, IP65, IP66, IP67, IP68
Flammability:	UL94-HB
Temperature:	40°C to 80°C
Material:	Elastomer
Material Base frame:	Polypropylene
Mounting options:	Screw type mounting, Snap-in
Characteristics:	Silicone-free, Oil and mold resistant, Higher chemical resistance, Halogen-free



Description

Hygienic multi-membrane cable entry plate / KEL-DPU-HD has been developed especially for installation in food and packaging machines. During the development according to Hygienic Design guidelines, care has been taken to ensure that the visible side of the cable entry plate is free of dirt-collecting recesses. The surface was kept very smooth ($R_a = 0.421 \mu\text{m}$ according to ISO 4287).

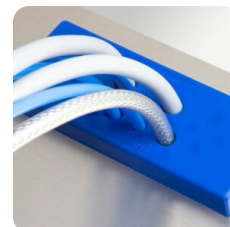
The outer contour has a radius of 6 mm instead of the required 3 mm. In addition, KEL-DPU-HD uses an FDA-compliant elastomer in accordance with food approval 1935/2004/EC and (EU) 10/2011. The signal color blue ensures clear visual color recognition.

Hygienic Cable entry plate multi-membrane / KEL-DPU-HD's entry plates are designed to pull and seal cables without connectors (from 3.2 mm to 20.5 mm in diameter) in confined spaces with IP66/IP68**. The KEL-DPU-HD is particularly characterized by its solid robust frame and the increased strain relief of the drawn cables.

- KEL-DPU-HD 24 exactly matches the cutout dimensions of 24-pin standard industrial connectors
- The cable entry plate is mounted either by screwing it to the inside of the enclosure or by snapping it into the recess
- ** IP68 only when screw mounted

Advantages:

- Elastomer of the cable entry plate made of material according to 1935/2004/EG , (EU) 10/2011
- FDA compliant
- Developed according to hygienic design guidelines
- Hygienic design – free of dirt-collecting recesses
- Very flat design, very smooth surface ($R_a = 0,421 \mu\text{m}$ acc. to ISO 4287)
- Dual sealing of cables (IP66/IP68**)
- High strength and stability
- High strain relief
- Quick and easy assembly



Article number

Art.No	Description	Number of Cables	Max Kabeldia.	Length mm	Width mm	Height mm	Smoothness	My Wall	Max Wall	Cable. Interval	Unit	Pc
73930	KEL-DPU-HD 24 21	21	12.5	147	58	14	Ra = 0.421 µm	1.5	2	1 x 3.2-6.3 mm 14 x 4-7.5 mm 4 x 5.5-10.5 mm 2 x 8-12.5 mm	st	10
73932	KEL-DPU-HD 24 16-1	16	16.2	147	58	14	Ra = 0.421 µm	1.5	2	2 x 3.2-6.3 mm 9 x 4-7.5 mm 1 x 5.5-10.5 mm 1 x 8-12.5 mm 3 x 12-16.2 mm	st	10
73934	KEL-DPU-HD 24 17	17	12.5	147	58	14	Ra = 0.421 µm	1.5	2	4 x 3.2-6.3 mm 2 x 4-7.5 mm 1 x 5.5-10.5 mm 10 x 8-12.5 mm	st	10
73936	KEL-DPU-HD 24 16	16	14.5	147	58	14	Ra = 0.421 µm	1.5	2	8 x 0.13-0.22 in 6 x 0.20-0.33 in 2 x 0.37- 0.57 in	st	10
73938	KEL-DPU-HD 24 20	20	10.5	147	58	14	Ra = 0.421 µm	1.5	2	12 x 3.2-5.5 mm 8 x 5-10.5 mm	st	10
73940	KEL-DPU-HD 24 13	13	20.5	147	58	14	Ra = 0.421 µm	1.5	2	10 x 3.2-6.3 mm 3 x 16-20.5 mm	st	10
73942	KEL-DPU-HD 24 32	32	6.3	147	58	14	Ra = 0.421 µm	1.5	2	32 x 3.2-6.3 mm	st	10
73944	KEL-DPU-HD 24 14	14	10.5	147	58	14	Ra = 0.421 µm	1.5	2	5 x 3.2-6.3 mm 2 x 4-7.5 mm 3 x 5.5-10.5 mm 1 x 8-12.5 mm 3 x 12-16.2 mm	st	10