

Cable entry frame | KEL-JUMBO

Divisible frame | for lead cable up to 65mm | IP54 | UL Type 12

Article:	KEL-JUMBO
Brand:	icotek
IP rating:	IP54
UL Type:	UL Type 12
Flammability:	UL94-V0, self-extinguishing
Temperature:	-40°C to 140°C
Material:	Polyamide
Mounting options:	Screw mounting
Characteristics:	Vibration-proof, UV-resistant, Silicone-free, Anti-corrosive (V2A versions), Halogen-free



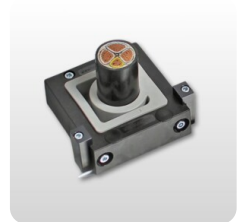
Description

Cable entry frame / KEL-JUMBO for installation of cables and wires with a diameter of up to 65 mm, especially suitable for connection cables. The innovative design with the flex membrane provides bending and adjustment of the position for larger and stiffer cables. We recommend round hole cutting for KEL-JUMBO, which can be done using a standard knockout tool.

- Suggested cut-out: cable diameter 15-20%
- A flat rubber gasket is included in the load

Advantages:

- Installation of cables up to 65 mm
- It is possible to install fixed cables in angles
- Remodeling, repairs and maintenance can be done much easier and faster
- Strain relief according to EN 62444



Article number

Art.No	Description	Number of Cables	Maximum cable diameter	Length mm	Width mm	Height mm	Mounting height	Punching	Suitable for interventions	Unit	Pc
42350	KEL-JUMBO 2	2	65	200	116	35	35	168 x 80.5	2 x KTF	st	1
42350.200	KEL-JUMBO 2 V2A	2	65	200	116	35	35	168 x 80.5	2 x KTF	st	1
42351	Gasket JUMBO 2			200.3	116.3	2	2			st	1
42360	KEL-JUMBO 1	1	65	110	116	35	35	78 x 80.5	1 x KTF	st	1
42360.200	KEL-JUMBO 1 V2A	1	65	110	116	35	35	78 x 80.5	1 x KTF	st	1
42361	Gasket JUMBO 1			110.3	116.3	2	2			st	1