

Cable entry plate | KEL-DPU

Multi-membrane | robust, strong strain relief | IP66 - IP68 | UL Type 12/4X*

Article:	KEL-DPU
Brand:	icotek
Protection class:	IP54, IP55, IP64, IP65, IP66, IP67, IP68
UL Type:	UL Type 12, UL Type 4X*
Flammability:	UL94-V0, self-extinguishing
Temperature:	40°C to 100°C
Material:	Elastomer
Material Base frame:	Polypropylene
Mounting options:	Screw type mounting, Snap-in
Characteristics:	Silicone-free, Halogen-free



Description

Cable entry plate / KEL-DPU are designed to route and seal cables without connectors (from 3.2 mm to 20.5 mm in diameter) in confined spaces with IP65 / IP66 / up to UL Type 4X* ratings.

The KEL-DPU is particularly characterized by its fixed robust frame and the increased strain relief.

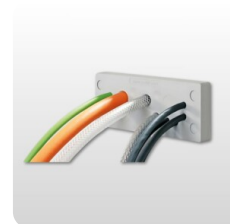
KEL-DPU 24 matches exact hole dimensions for 24-pin standard industrial connectors.

The installation of the Cable Entry Plate Multi-Membrane / KEL-DPU with cables or pneumatic hoses can be done quickly and easily. Simply by making a small hole in the thin membrane and then pushing the cables through.

- ST-B Plugs can be used for sealing in the membrane when cables have been removed.
- *4X for indoor use only

Advantages:

- High stability, vibration resistant
- Quick and easy assembly
- High cable density
- Certified protection types IP66/IP68 (according to EN 60529)
- Hygienic design – free from dirt-collecting depressions



Article number

Art.No	Description	Number of Cables	Max Kabeldia.	Length mm	Width mm	Height mm	Color	Punching	My Wall	Max Wall	Cable. Interval	Unit	Pc
43930	KEL-DPU 24 21	21	12.5	147	58	14	gray	112 x 36	1.5	2	1 x 3.2-6.3 mm 14 x 4-7.5 mm 4 x 5.5- 10.5 mm 2 x 8-12.5 mm	st	10
43932	KEL-DPU 24 16-1	16	16.2	147	58	14	gray	112 x 36	1.5	2	2 x 3.2-6.3 mm 9 x 4-7.5 mm 1 x 5.5-10.5 mm 1 x 8- 12.5 mm 3 x 12-16.2 mm	st	10
43934	KEL-DPU 24 17	17	12.5	147	58	14	gray	112 x 36	1.5	2	4 x 3.2-6.3 mm 2 x 4-7.5 mm 1 x 5.5-10.5 mm 10 x 8- 12.5 mm	st	10
43936	KEL-DPU 24 16	16	14.5	147	58	14	gray	112 x 36	1.5	2	8 x 0.13-0.22 in 6 x 0.20- 0.33 in 2 x 0.37-0.57 in	st	10
43938	KEL-DPU 24 20	20	10.5	147	58	14	gray	112 x 36	1.5	2	12 x 3.2-5.5 mm 8 x 5- 10.5 mm	st	10
43940	KEL-DPU 24 13	13	20.5	147	58	14	gray	112 x 36	1.5	2	10 x 3.2-6.3 mm 3 x 16- 20.5 mm	st	10
43942	KEL-DPU 24 32	32	6.3	147	58	14	gray	112 x 36	1.5	2	32 x 3.2-6.3 mm	st	10

Article number

43944	KEL-DPU 24 14	14	16.2	147	58	14	gray	112 x 36	1.5	2	5 x 3.2-6.3 mm 2 x 4-7.5 mm 3 x 5.5-10.5 mm 1 x 8-12.5 mm 3 x 12-16.2 mm	st	10
50930	KEL-DPU 24 21	21	12.5	147	58	14	black	112 x 36	1.5	2	1 x 3.2-6.3 mm 14 x 4-7.5 mm 4 x 5.5-10.5 mm 2 x 8-12.5 mm	st	10
50932	KEL-DPU 24 16-1	16	16.2	147	58	14	black	112 x 36	1.5	2	2 x 3.2-6.3 mm 9 x 4-7.5 mm 1 x 5.5-10.5 mm 1 x 8-12.5 mm 3 x 12-16.2 mm	st	10
50934	KEL-DPU 24 17	17	12.5	147	58	14	black	112 x 36	1.5	2	4 x 3.2-6.3 mm 2 x 4-7.5 mm 1 x 5.5-10.5 mm 10 x 8-12.5 mm	st	10
50936	KEL-DPU 24 16	16	14.5	147	58	14	black	112 x 36	1.5	2	8 x 0.13-0.22 in 6 x 0.20-0.33 in 2 x 0.37-0.57 in	st	10
50938	KEL-DPU 24 20	20	10.5	147	58	14	black	112 x 36	1.5	2	12 x 3.2-5.5 mm 8 x 5-10.5 mm	st	10
50940	KEL-DPU 24 13	13	20.5	147	58	14	black	112 x 36	1.5	2	10 x 3.2-6.3 mm 3 x 16-20.5 mm	st	10

Article number

50942	KEL-DPU 24 32	32	6.3	147	58	14	black	112 x 36	1.5	2	32 x 3.2-6.3 mm	st	10
50944	KEL-DPU 24 14	14	16.2	147	58	14	black	112 x 36	1.5	2	5 x 3.2-6.3 mm 2 x 4-7.5 mm 3 x 5.5-10.5 mm 1 x 8- 12.5 mm 3 x 12-16.2 mm	st	10