

## Enclosure | MBX Basic K

Plastic enclosure | Transparent lid | PC | RAL7035 | IK08 | IP69

Article:	MBX Basic K
Brand:	Multi-Box
Protection class:	IP69
Base material & lock	Polycarbonate
Sealing material:	Polyurethane
Material screws:	Stainless (V2A)
Flammability:	V2
Operating temperature:	-40°C (permanent)
Color:	RAL 7035
Impact resistance:	IK08



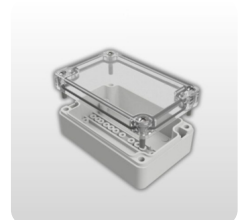
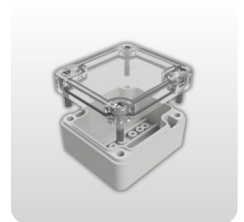
### Description

The MBX Basic K enclosure is made of polycarbonate and is designed for industrial applications. It can replace aluminum enclosures without any problems. With its high IP rating, dust or water will never be a problem for the MBX Basic. It is superior to all aluminum enclosures, especially in applications with an increased risk of corrosion. The enclosure can withstand high-pressure washing, steam jet cleaning and short-term flooding.

- UV resistant
- Suitable for both indoor and outdoor use
- Available with grey or transparent cover

### Customize your box

- Mounting & Assembly
- Printing
- Design
- Color
- Punching



## Article number

Art.No	Description	Type		Length mm	Width mm	Height mm	Protection class	Color	PDF
1004100200	Enclosure MBX Basic   PC	Transparent lid	MBX 606030 BK	58	64	34	IP69	RAL 7035	PDF
1004100400	Enclosure MBX Basic   PC	Transparent lid	MBX 906030 BK	98	64	35	IP69	RAL 7035	PDF
1004100900	Enclosure MBX Basic   PC	Transparent lid	MBX 708055 BK	75	80	57	IP69	RAL 7035	PDF
1004101100	Enclosure MBX Basic   PC	Transparent lid	MBX 128055 BK	125	80	57	IP69	RAL 7035	PDF
1004101300	Enclosure MBX Basic   PC	Transparent lid	MBX 178055 BK	175	80	57	IP69	RAL 7035	PDF
1004101800	Enclosure MBX Basic   PC	Transparent lid	MBX 121280 BK	122	120	80	IP69	RAL 7035	PDF
1004101900	Enclosure MBX Basic   PC	Transparent lid	MBX 121290 BK	122	120	90	IP69	RAL 7035	PDF
1004102300	Enclosure MBX Basic   PC	Transparent lid	MBX 221290 BK	220	120	90	IP69	RAL 7035	PDF
1004102500	Enclosure MBX Basic   PC	Transparent lid	MBX 161690 BK	160	160	90	IP69	RAL 7035	PDF
1004102600	Enclosure MBX Basic   PC	Transparent lid	MBX 261690 BK	260	160	90	IP69	RAL 7035	PDF