

## Enclosure | MBI-BK-MK

Industrial plastic enclosure | Knockouts & Transparent caps | PC | RAL9005 | IK08 | IP66

|                        |                            |
|------------------------|----------------------------|
| Article:               | MBI-BK-MK                  |
| Brand:                 | Multi-Box                  |
| Protection class:      | IP66                       |
| Material Bottom:       | Polycarbonate GF10         |
| Lid Material:          | Polycarbonate              |
| Seal material:         | Polyurethane               |
| Screw material:        | Plastic                    |
| Flammability:          | V0 (Self-extinguishing)    |
| Operating temperature: | -40°C to 100°C (permanent) |
| Color:                 | RAL 9005                   |



### Description

The MBI-BK-MK enclosure is the perfect combination of discreet presence, modern design and excellent technical performance. The base of the enclosure is designed with metric pre-punched knockouts on all four sides. These can be opened for cable entry.

- Covers are supplied transparent in this version.

Its all-black design integrates seamlessly into industrial environments and enables a discreet, almost invisible installation in factory halls, control cabinets, camera systems or elevator installations. Thanks to its design in elegant black color and clean shapes, MBI-BLACK boxes have a modern appearance.

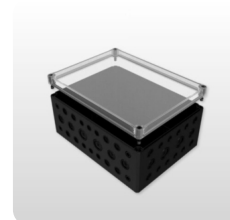
Meets high technical requirements

Junction box / MBI-BK-MK reliably meets the high technical requirements for industrial installation technology. MBI BLACK enclosures are made of fiberglass-reinforced polycarbonate. The material is UV-resistant (UL 746C F1) and self-extinguishing (UL 94 V0). With a seamless foamed 2-component polyurethane gasket, all types achieve protection class IP66. Cover screws are made of plastic material and are therefore completely corrosion-free. The impact resistance corresponds to IK08, which makes the MBI BLACK enclosures ideal for use in industrial and outdoor applications.

- UV-resistant
- Plastic screws for mounting are included in the delivery.
- MBI enclosures offer a variety of mounting points for direct fixation of components to the base.

Customize your box

- Mounting & Assembly
- Printing
- Design
- Color



## Article number

| Art.No     | Description              | Type                   |                       | Length mm | Width mm | eye etc. | Protection class | Color   | PDF |
|------------|--------------------------|------------------------|-----------------------|-----------|----------|----------|------------------|---------|-----|
| 0908109760 | Enclosure MBI-BK-MK   PC | Transp. Lid   Knockout | MBI-PC BK 090706 MK   | 57        | 94       | 65       | 57               | RAL9005 | PDF |
| 0908103960 | Enclosure MBI-BK-MK   PC | Transp. Lid   Knockout | MBI-PC BK 130906 MK   | 57        | 130      | 94       | 57               | RAL9005 | PDF |
| 0908108960 | Enclosure MBI-BK-MK   PC | Transp. Lid   Knockout | MBI-PC BK 180906 MK   | 57        | 180      | 94       | 57               | RAL9005 | PDF |
| 0908101170 | Enclosure MBI-BK-MK   PC | Transp. Lid   Knockout | MBI-PC BK 111107 MK   | 66        | 110      | 110      | 66               | RAL9005 | PDF |
| 0908108390 | Enclosure MBI-BK-MK   PC | Transp. Lid   Knockout | MBI-PC BK 181309 MK   | 90        | 180      | 130      | 90               | RAL9005 | PDF |
| 0908108890 | Enclosure MBI-BK-MK   PC | Transp. Lid   Knockout | MBI-PC BK 181809 MK   | 90        | 182      | 180      | 90               | RAL9005 | PDF |
| 0908105810 | Enclosure MBI-BK-MK   PC | Transp. Lid   Knockout | MBI-PC BK 251811 MK   | 111       | 254      | 180      | 111              | RAL9005 | PDF |
| 0908102230 | Enclosure MBI-BK-MK   PC | Transp. Lid   Knockout | MBI-L-PC BK 202013 MK | 130       | 200      | 200      | 130              | RAL9005 | PDF |
| 0908103230 | Enclosure MBI-BK-MK   PC | Transp. Lid   Knockout | MBI-L-PC BK 302013 MK | 130       | 300      | 200      | 130              | RAL9005 | PDF |
| 0908103380 | Enclosure MBI-BK-MK   PC | Transp. Lid   Knockout | MBI-L-PC BK 303019 MK | 185       | 300      | 300      | 185              | RAL9005 | PDF |
| 0908104380 | Enclosure MBI-BK-MK   PC | Transp. Lid   Knockout | MBI-L-PC BK 403019 MK | 185       | 400      | 300      | 185              | RAL9005 | PDF |