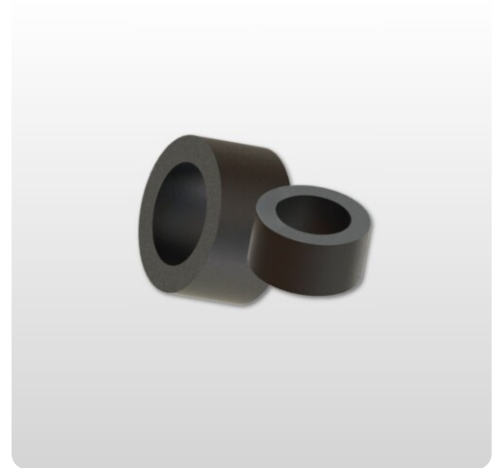


## Reduction efforts

Clamping area reduction for cable glands | For M12 - M63

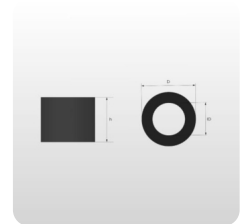
Article:	Reduction efforts
Brand:	Bimed
Material:	Chloroprene or NBR
Color:	Black



### Description

Optimize your cable installation with our high-quality reduction inserts. These reducers are specifically designed to improve the performance and safety of your industrial applications.

- Effectively reduces the clamping areas of cable glands
- Made of durable rubber material for long-lasting use
- Provides reliable strain relief and sealing
- Ideal for standardized industrial applications



## Article number

Art.No	Description	Size	Replace Mine	Replaces Max	Cable Minimum	Cable Max	Material	Color	Unit	Pc
CMS-0SC	Reduction effort   CR	M12	3	6.5	2	5	CR	Black	st	1
CMS-0SN	Reduction effort   NPR	M12	3	6.5	2	5	NPR	Black	st	1
CMS-01C	Reduction effort   CR	M16	4	8	2	6	CR	Black	st	1
CMS-01N	Reduction effort   NPR	M16	4	8	2	6	NPR	Black	st	1
CMS-02C	Reduction effort   CR	M20	6	12	5	9	CR	Black	st	1
CMS-02N	Reduction effort   NPR	M20	6	12	5	9	NPR	Black	st	1
CMS-03LC	Reduction effort   CR	M25	11	17	9	13	CR	Black	st	1
CMS-03LN	Reduction effort   NPR	M25	11	17	9	13	NPR	Black	st	1
CMS-04LC	Reduction effort   CR	M32	15	21	11	15	CR	Black	st	1
CMS-04LN	Reduction effort   NPR	M32	15	21	11	15	NPR	Black	st	1
CMS-05LC	Reduction effort   CR	M40	19	28	16	23	CR	Black	st	1
CMS-05LN	Reduction effort   NPR	M40	19	28	16	23	NPR	Black	st	1
CMS-06C	Reduction effort   CR	M50	30	38	25	31	CR	Black	st	1

Article number

CMS-06N	Reduction effort   NPR	M50	30	38	25	31	NPR	Black	st	1
CMS-07C	Reduction effort   CR	M63	34	44	29	35	CR	Black	st	1
CMS-07N	Reduction effort   NPR	M63	34	44	29	35	NPR	Black	st	1