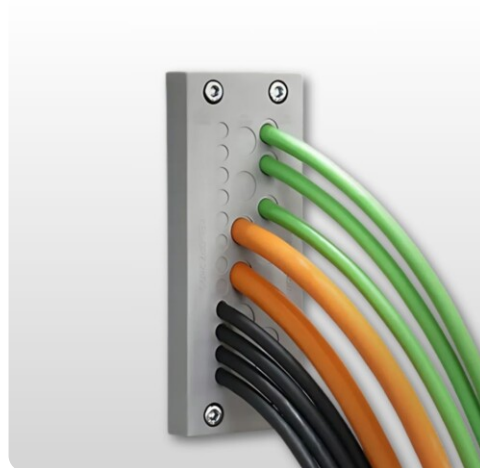


Cable entry plate | KEL-DPZ

Multi-membrane | high cable density | Up to IP66 | UL Type 12

Article:	KEL-DPZ
Brand:	icotek
Protection class:	IP54, IP55, IP64, IP65, IP66
UL Type:	UL Type 12
Flammability:	UL94-V0, self-extinguishing
Temperature:	40°C to 100°C
Material:	Elastomer
Material Base frame:	Polyamide, Stainless steel V2A
Mounting options:	Screw mounting
Characteristics:	Silicone-free, Halogen-free



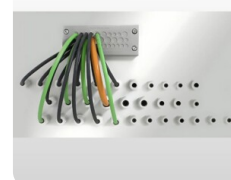
Description

Cable entry plate multi-membrane / KEL-DPZ are designed to guide and seal up to 121 cables without connectors or fiber optics (from 2.5 mm to 22 mm in diameter) in limited space. The KEL-DPZ products are a cost- and time-saving alternative to traditional cable glands. The installation of the cable entry plate / KEL-DPZ with cables or pneumatic hoses can be done quickly and easily. Just make a small hole in the thin membrane, push the cables through. KEL-DPZ provides strain relief and protection up to IP66 / UL type 12.

- The KEL-DPZ size precisely matches cut-out dimensions of 6-/16-/24-pin standard industrial connectors. KEL-DPZ-B plate exactly matches hole dimensions 46x46mm.
- KEL-DPZ-KL matches on terminal boxes KL by Rittal. The cable entry plate KEL-DPZ-KL is designed for the entry of up to 72 cables without connectors
- ST-B plugs can be used to seal pierced membranes if cables have been removed

Advantages:

- Quick assembly
- High cable density
- Certified protection types IP66 (according to EN 60529)
- Automatic sealing and strain relief for the cable
- Hygienic design – free from dirt-collecting depressions
- Space-saving design



Article number

Art.No	Description	Number of Cables	Max Kabeldia.	Length mm	Width mm	Height mm	Mounting height	Color	Punching	Cable. Interval	Unit	Pc
43700	KEL-DPZ 24 14	14	22	147	58	14	14	gray	112 x 36	10 x 3.2-6.5 mm 4 x 16-22 mm	st	10
43705	KEL-DPZ 24 17	17	16.2	147	58	14	14	gray	112 x 36	6 x 3.2-6.5 mm 6 x 5-10.2 mm 5 x 9-16.2 mm	st	10
43710	KEL-DPZ 24 25	25	12	147	58	14	14	gray	112 x 36	12 x 3.2-6.5 mm 7 x 4.8-9.7 mm 6 x 7.5-12 mm	st	10
43711	KEL-DPZ 24 26	26	10.2	147	58	14	14	gray	112 x 36	26 x 5-10.2 mm	st	10
43715	KEL-DPZ 24 42	42	6.5	147	58	14	14	gray	112 x 36	42 x 3.2-6.5 mm	st	10
43720	KEL-DPZ 24 15	15	12	147	58	14	14	gray	112 x 36	15 x 7.5-12 mm	st	10
43725	KEL-DPZ 24 16	16	22	147	58	14	14	gray	112 x 36	8 x 3.2-6.5 mm 4 x 5-9.7 mm 2 x 9-16.2 mm 2 x 16-22 mm	st	10
43730	KEL-DPZ 24 32	32	12	147	58	14	14	gray	112 x 36	21 x 3.2-6.5 mm 8 x 5-10.2 mm 3 x 7.5-12 mm	st	10
43735	KEL-DPZ 24 121	121	5	147	58	14	14	gray	112 x 36	119 x 1.5-2.6 mm 2 x 2.5-5 mm	st	10
50700	KEL-DPZ 24 14	14	22	147	58	14	14	black	112 x 36	10 x 3.2-6.5 mm 4 x 16-22 mm	st	10
50705	KEL-DPZ 24 17	17	16.2	147	58	14	14	black	112 x 36	6 x 3.2-6.5 mm 6 x 5-10.2 mm 5 x 9-16.2 mm	st	10

Article number

50710	KEL-DPZ 24 25	25	12	147	58	14	14	black	112 x 36	12 x 3.2-6.5 mm 7 x 4.8-9.7 mm 6 x 7.5-12 mm	st	10
50711	KEL-DPZ 24 26	26	10.2	147	58	14	14	black	112 x 36	26 x 5-10.2 mm	st	10
50715	KEL-DPZ 24 42	42	6.5	147	58	14	14	black	112 x 36	42 x 3.2-6.5 mm	st	10
50720	KEL-DPZ 24 15	15	12	147	58	14	14	black	112 x 36	15 x 7.5-12 mm	st	10
50725	KEL-DPZ 24 16	16	22	147	58	14	14	black	112 x 36	8 x 3.2-6.5 mm 4 x 5-9.7 mm 2 x 9-16.2 mm 2 x 16-22 mm	st	10
50730	KEL-DPZ 24 32	32	12	147	58	14	14	black	112 x 36	21 x 3.2-6.5 mm 8 x 5-10.2 mm 3 x 7.5-12 mm	st	10
50735	KEL-DPZ 24 121	121	5	147	58	14	14	black	112 x 36	119 x 1.5-2.6 mm 2 x 2.5-5 mm	st	10